

TS-1104SG & TS-1104SG1 (Silicone Waterproof Series)

Sealed Tactile Switch for SMT 6.2 x 6.2 mm,
with 3.1/3.5/3.8/4.3/5.0mm Height Softuator

YFJ Switch Datasheet



Specifications

Function	Momentary action
Contact Arrangement	1 make contact = SPST, N.O.
Terminals	J bend & Gullwing type for SMT
Sealing	IP67

Electrical Characteristics

Dielectric Strength (50 Hz, 1 min.)	≥ 250 Vrms	
Contact Resistance	≤ 100mΩ	
Insulation Resistance (100 V)	≥ 1000 M Ω	
Bounce Time	≤ 1 ms	
	Silver	Gold
Maximum Power	1 VA	0.2 VA
Maximum Voltage	32 VDC	32 VDC
Minimum Voltage	20 mV	20 mV
Maximum Current	50 mA	10 mA
Minimum Current	1 mA ¹	0.1 mA

Note:

1. Ultra low current with 10 μA - 1 VDC version is available upon request

Environmental Characteristics

	Silver	Gold
Operating Temperature	-40°C to 85°C	-40°C to 125°C
Storage Temperature	-55°C to 85°C	-55°C to 125°C

Description

The KSC2 series of sealed tactile switches for SMT are IP67 rated, 3.5mm high momentary action tactile switches, featuring a soft actuator. The switches are available with a variety of operating forces and in a range of electrical lifespans, depending on model. The KSC2 series are designed to give users a positive adaptable tactile feeling, perfect for consumer-facing applications.

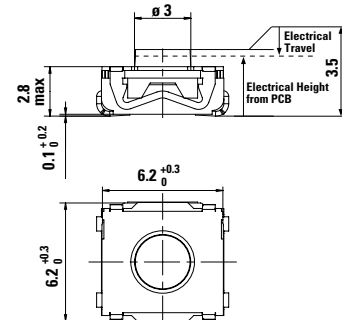
Features & Benefits

- Electrical Height for easier integration due to more precise tolerances
- Soft actuator 3.5mm high
- IP67
- Compatible with lead free reflow soldering process of SMT devices
- Low halogen, RoHS and REACH compliant

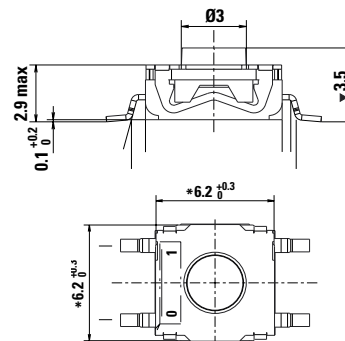
Applications

- Industrial electronics
- Consumer products
- Transportation
- Medical

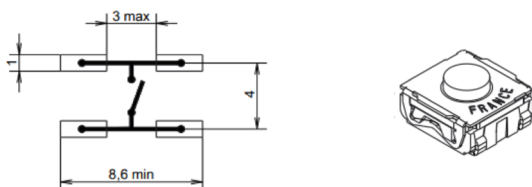
TS-1104SG H=3.1/3.5/3.8/4.3/5.0 Dimensions (mm) G Termination



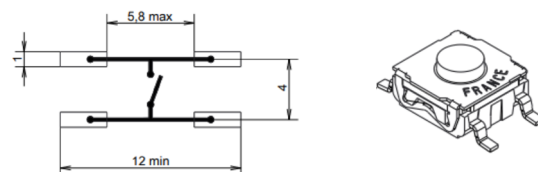
TS-1104SG1 H=3.1/3.5/3.8/4.3/5.0 Dimensions (mm) G Termination



J Terminations (mm)



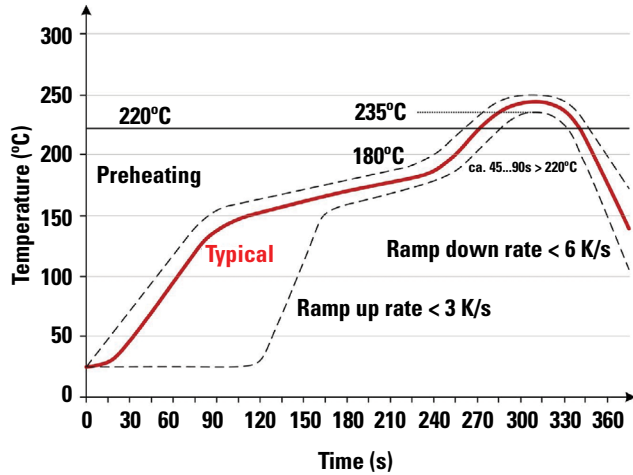
G Terminations (mm)



TS-1104SG & TS-1104SG1(Silicone Waterproof Series)
 Sealed Tactile Switch for SMT 6.2 x 6.2 mm,
 with 3.1/3.5/3.8/4.3/5.0mm Height Softuator

YFJ Switch **Datasheet**

Soldering Profile

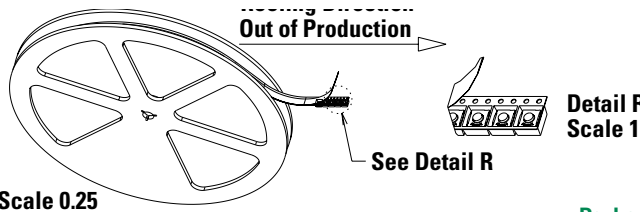


Soldering process: Depending on the application, this component is suited to the following methods:

- Terminals being silver or gold plated over a nickel barrier, the use of slightly activated flux is suitable.
- Lead free soldering process in accordance with the definition on the left.

Note: Up to 2 reflow cycles in accordance with the above temperature profile

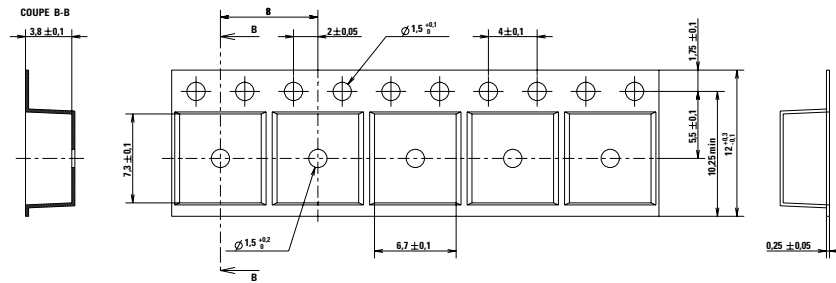
Tape & Reel



Packaging Details

Type	Tape & reel
Number of Parts in Packaging	2,000
Other Information	Tape and reel per EIA 481
Transport Conditions	According to specification NF H00-060

**Packaging (mm)
J version**



G version

